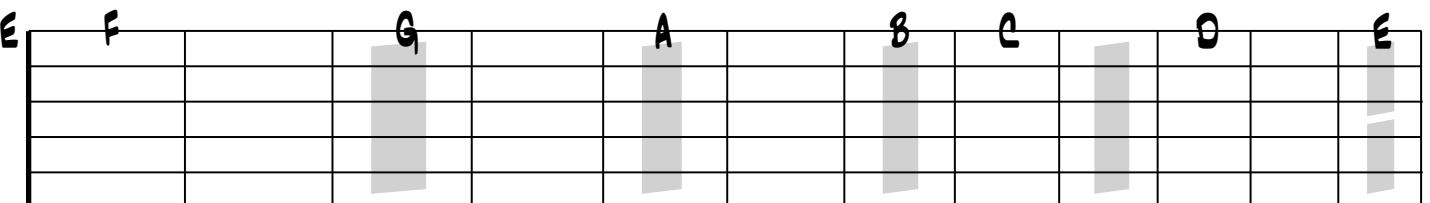
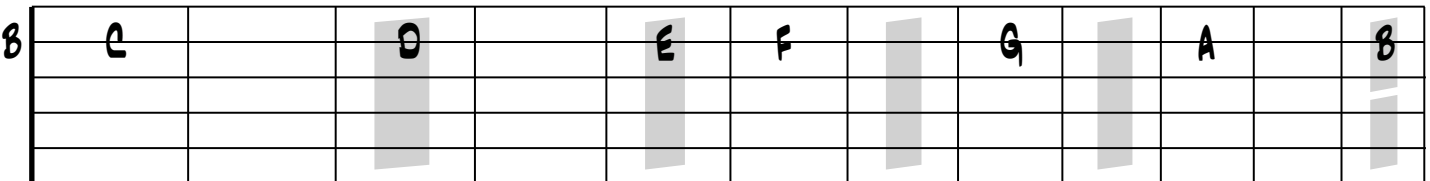
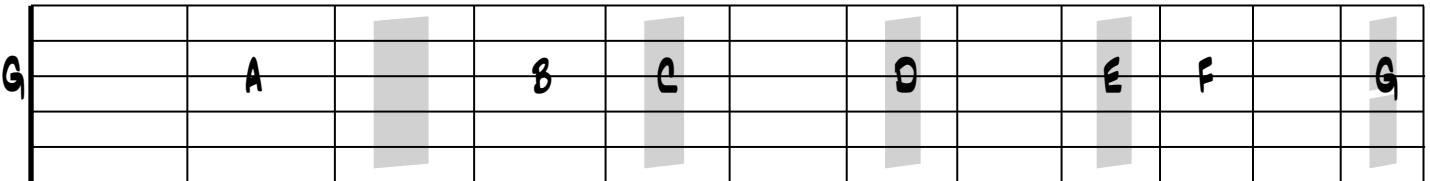
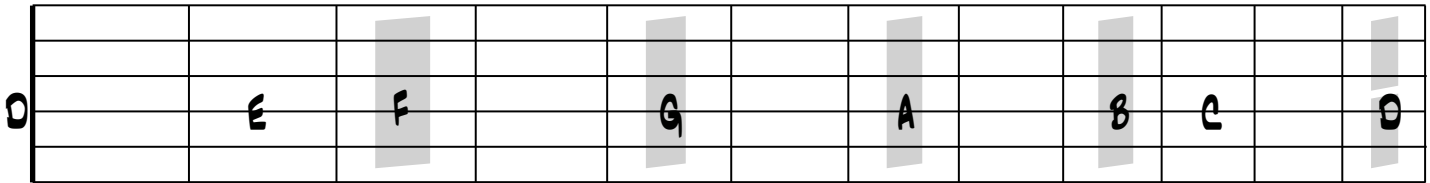
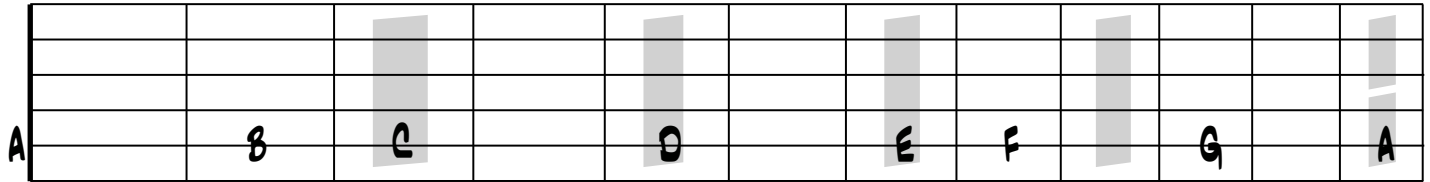
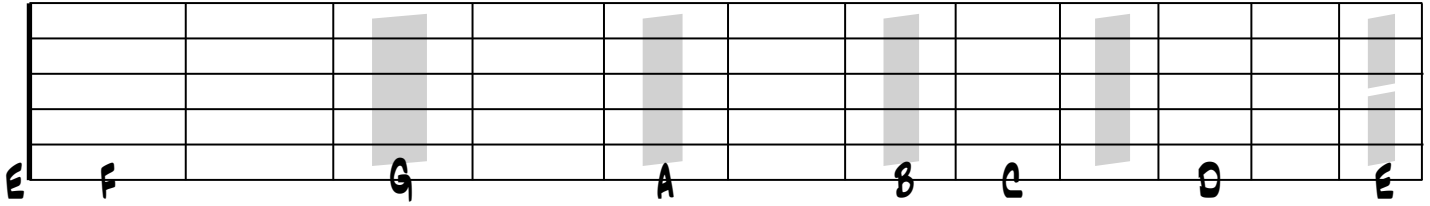


# NOTES ON ONE STRING

C MAJOR

OPEN - FRET 12



# NOTES IN POSITIONS

C MAJOR

OPEN - FRET 12

Diagram 1: Frets 1-4. Notes: Fret 1 (E, A), Fret 2 (F, B $\flat$ ), Fret 3 (G, B), Fret 4 (A, C).

Diagram 2: Frets 5-8. Notes: Fret 5 (B, E $\flat$ ), Fret 6 (C, G), Fret 7 (D, A $\flat$ ), Fret 8 (E, B).

Diagram 3: Frets 9-12. Notes: Fret 9 (F, B $\flat$ ), Fret 10 (G, B), Fret 11 (A, C), Fret 12 (B, E $\flat$ ).

Diagram 4: Frets 13-16. Notes: Fret 13 (C, G), Fret 14 (D, A $\flat$ ), Fret 15 (E, B), Fret 16 (F, B $\flat$ ).

Diagram 5: Frets 17-20. Notes: Fret 17 (G, B), Fret 18 (A, C), Fret 19 (B, E $\flat$ ), Fret 20 (C, G).

# NOTES IN SCALE SHAPES

C MAJOR

OPEN - FRET 12

A guitar fretboard diagram showing the first scale shape for C major. The fretboard is oriented vertically with the 12th fret at the top. The notes are: 12th fret (C), 11th fret (D), 10th fret (E), 9th fret (F), 8th fret (G), 7th fret (A), 6th fret (B), 5th fret (C), 4th fret (D), 3rd fret (E), 2nd fret (F), 1st fret (G), and an open string (A).

A guitar fretboard diagram showing the second scale shape for C major. The fretboard is oriented vertically with the 12th fret at the top. The notes are: 11th fret (D), 10th fret (E), 9th fret (F), 8th fret (G), 7th fret (A), 6th fret (B), 5th fret (C), 4th fret (D), 3rd fret (E), 2nd fret (F), 1st fret (G), and an open string (A).

A guitar fretboard diagram showing the third scale shape for C major. The fretboard is oriented vertically with the 12th fret at the top. The notes are: 10th fret (E), 9th fret (F), 8th fret (G), 7th fret (A), 6th fret (B), 5th fret (C), 4th fret (D), 3rd fret (E), 2nd fret (F), 1st fret (G), and an open string (A).

A guitar fretboard diagram showing the fourth scale shape for C major. The fretboard is oriented vertically with the 12th fret at the top. The notes are: 9th fret (F), 8th fret (G), 7th fret (A), 6th fret (B), 5th fret (C), 4th fret (D), 3rd fret (E), 2nd fret (F), 1st fret (G), and an open string (A).

A guitar fretboard diagram showing the fifth scale shape for C major. The fretboard is oriented vertically with the 12th fret at the top. The notes are: 8th fret (G), 7th fret (A), 6th fret (B), 5th fret (C), 4th fret (D), 3rd fret (E), 2nd fret (F), 1st fret (G), and an open string (A).

A guitar fretboard diagram showing the sixth scale shape for C major. The fretboard is oriented vertically with the 12th fret at the top. The notes are: 7th fret (A), 6th fret (B), 5th fret (C), 4th fret (D), 3rd fret (E), 2nd fret (F), 1st fret (G), and an open string (A).

A guitar fretboard diagram showing the seventh scale shape for C major. The fretboard is oriented vertically with the 12th fret at the top. The notes are: 6th fret (B), 5th fret (C), 4th fret (D), 3rd fret (E), 2nd fret (F), 1st fret (G), and an open string (A).

P